



# EAGLE POINTE PRIVATE GATED ENCLAVE

# ELEVATE YOUR *Experience*



### *Eagle Pointe*

1 Acre Golf Course or Greenbelt Homesites  
130 ft. x 330 ft. 4,300 sq. ft. – No Max

### *Elk Reserve*

1/2 to 3/4 Acre Homesites  
90 ft. x 150 ft. 3,800 – 6,000 sq. ft.  
110 ft. x 200 ft. 4,300 – No Max

Call to schedule a private tour.

-  Jeff Paul Custom Homes
-  Mary Ross Custom Homes
-  Partners In Building
-  Sullivan Signature Homes
-  Tom Cox, Jr. Design
-  Wendell Legacy Homes
-  Sold
-  Available Home

Nestled behind the private gates of Eagle Pointe is an enclave of distinctive properties for the buyer who appreciates the best life has to offer. Spacious homesites up to a full acre border Woodforest Golf Club and community lakes.



## AVAILABLE HOMES IN EAGLE POINTE



# WOODFOREST®

WoodforestTx.com • 936.447.2800  
Homes From \$1 Million+

# Custom Luxury Awaits



## JEFF PAUL CUSTOM HOMES 863 Eagle Pointe · Available March 2015

This French Country manse is located on a 1-acre homesite bordering Woodforest Golf Club. \$1,790,000

- 5,870-square-feet
- 5 bedrooms/5.5 baths/4 car garage
- Study, dining room, living room with fireplace, game room with bar downstairs. Double island kitchen opens to family room. Butler's pantry. Wine grotto with iron gate. Bonus room upstairs (260 sq. ft.) and elevator. Covered loggia with summer kitchen and fireplace.



## TOM COX, JR. DESIGN 187 Windfair Loop · Available Now

A New Orleans-inspired custom home with lake views from the front of the home. \$1,074,650

- 4,597-square-feet
- 5 bedrooms/5.5 baths/3 car garage
- Balconies, walls of windows and a welcoming courtyard with fireplace. Six sets of French doors open to the brick-paved balcony and porch that define the home's New Orleans-inspired exterior. Library and formal dining room flank an intimate cigar porch, one of seven outdoor living areas. Open kitchen includes a discreet catering area. Master suite with expansive walk-in closet that opens to the utility room.

## MARY ROSS CUSTOM HOMES 836 Eagle Pointe · Available Now

This Coastal Planation estate home offers spacious living and Mary Ross' signature Southern style. \$1,995,000

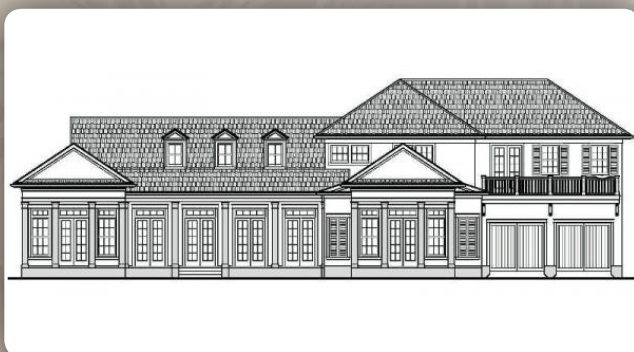
- 6,344-square-feet
- 5 bedrooms/5.5 baths/4 car garage
- Balconies, columns and abundant windows create an elegant elevation. Nine sets of French doors and a showcase kitchen with a beamed ceiling, a broad kitchen island with storage and a brick accent wall. Numerous built-ins, subtle wall coverings, cool neutrals and chandeliers. Located on a wooded 1-acre homesite along Woodforest Golf Club.



## TOM COX, JR. DESIGN 107 Windfair Loop · Available December 2014

A classic Southern-style custom home overlooking a 2-acre pond. \$1,190,000

- 5,173-square-feet
- 5 bedrooms/5.5 baths/3 car garage
- Featuring a wraparound porch and balconies that create an impressive elevation, the home will have ample opportunities to admire lakeside vistas. Twenty-eight-foot ceilings in the central family room add drama to the home's design. Circular kitchen island floods the open floor plan with natural light. Radius stairway repeats the circular design and the master bath echoes the architectural element with curved mirror walls. Accordion doors in the downstairs game room allow the area to open to the spacious porch, expanding outdoor entertainment possibilities.



## MARY ROSS CUSTOM HOMES 820 Eagle Pointe · Available Spring 2015

A Southern-style custom home located on a 1-acre golf course homesite bordering Woodforest Golf Club. \$2,097,000

- 6,231-square-feet
- 5 bedrooms/5+2 baths/3 car garage
- Optional sixth bedroom or second study available. Stucco exterior and numerous columns reflect a contemporary Southern style, complementing the wooded golf course homesite. Stunning foyer with curved wall of floor-to-ceiling bookcases. Spacious open living room.



## TOM COX, JR. DESIGN 103 Windfair Loop · Available Now

A classic Southern-style custom home overlooking a 2-acre pond. \$1,070,649

- 4,669-square-feet
- 5 bedrooms/6 baths/3 car garage
- Embellished wrought-iron columns and balconies, shutters, abundant windows and French doors. Kitchen is built for entertaining, with an adjacent catering kitchen. Dramatic two-story master bath featuring a steam shower. Downstairs guest suite with en suite bath has been plumbed to include a kitchenette for multi-generational households.